

BOLINAS-STINSON SCHOOL NEWS

Think-Feel-Communicate

What's Going On...January 20, 2017

Be Safe~Be Respectful~Be Responsible~Be Kind

Greetings Bolinas-Stinson School Community,

We have a beautiful school that serves our children very well. I feel appreciation for our staff who come to work everyday with the attitude of generosity and who show great care for the well-being of our children.

We all accept the idea that working to improve and evolve is good and positive. So within this idea, we as a school are embarking on a journey to continue to cultivate a school climate that is warm, receptive and responsive to the needs of the humans who come here everyday. We are not suggesting at all that we lack a positive school climate, but instead we are seeking to make it even better for all of us.

Our school values collaborating with parents and the greater community because we know that only together will we achieve what we want for our children. We have scheduled a parent education event for next Tuesday night, which mirrors work we are doing as a staff related to cultivating what we want in terms of school climate. Below is an invitation.

Thank you very much for showing up in the way that you can to help us continue to grow, for the betterment of our children.

Mindful Parenting with Roni Habib of EQ Schools

Tuesday January 24th

Quesada Building—Bolinas Campus

Dinner 5:30-6:30pm

Event 6:30-8:00

Childcare Provided

Bolinas-Stinson School invites you to attend an interactive session for parents, which is in alignment with the work we are developing as a staff (along with Site Council) to further meet the social-emotional needs of our students and continue to make the school climate the amazing place we want it to be.

We all want our children to be happy, more peaceful, more attuned to others' needs, and to be able to regulate during stressful times. The best way for them to learn these skills is through watching their role models practice it. Yet, what does it mean to be mindful? And what does it mean to parent mindfully? How can we become more present with and for our children when life can be so incredibly busy? In our 90 minutes together, we'll explore these questions and understand the why and how of mindful parenting. This session will be active, fun, and you'll learn a ton!

Hot soup and childcare provided!!

For more information on Roni and EQ Schools, check out:

<http://www.eqschools.com/speaking.php>

Have a wonderful weekend.

Warmly,
Jason

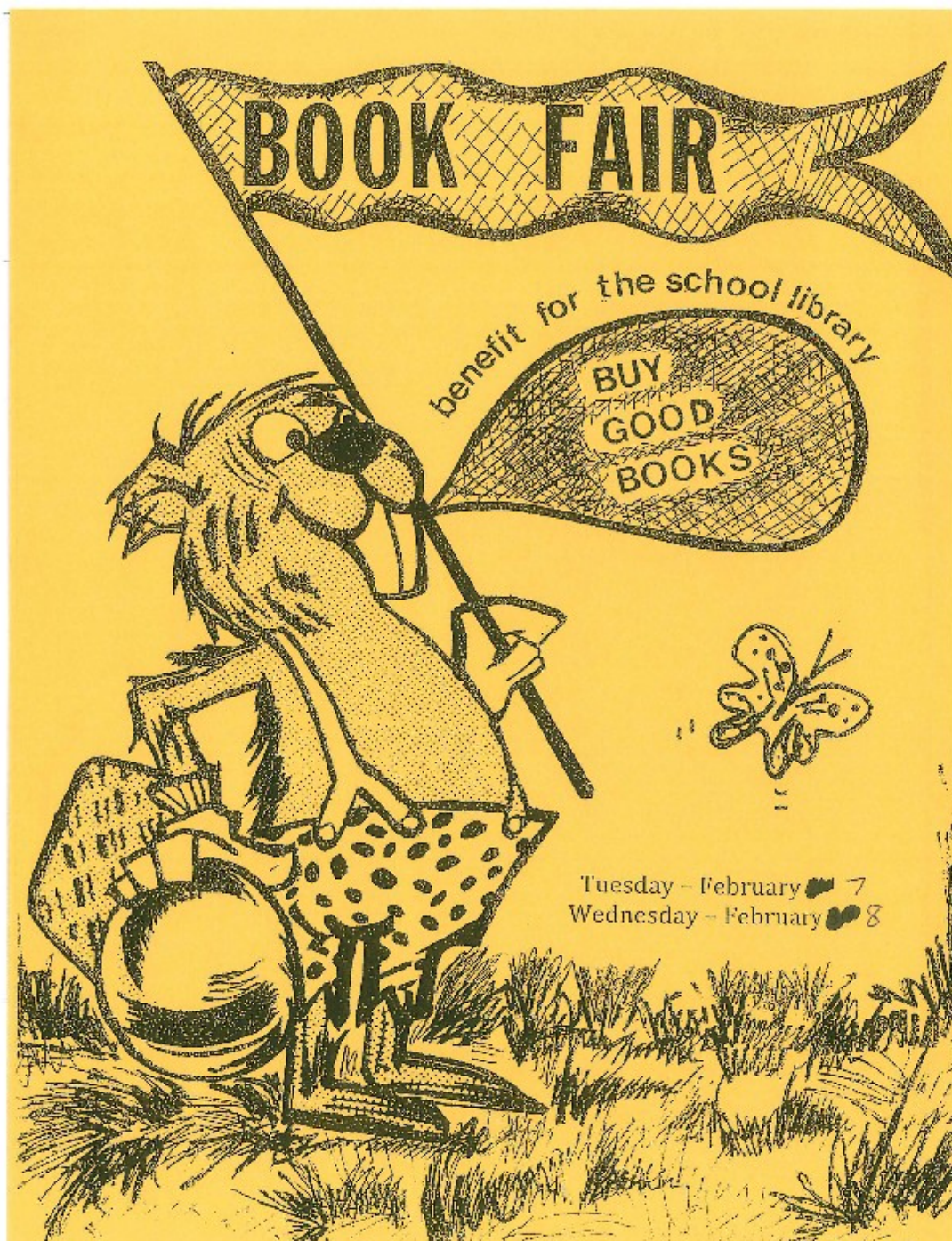
Jason Richardson
Principal,
Bolinas-Stinson
School

415-868-1603

jrichardson@bolinas-stinson.org

We do not learn from experience. We learn from reflecting on experience.”

— John Dewey



SNACK & LUNCH MENU

Monday 1/23

Snack: Cereal/oatmeal, hard-boiled egg, fruit, milk

Lunch: Vegetable chili, rice, salad bar, milk

Tuesday 1/24

Snack: Bagel & cream cheese/oatmeal, fruit, milk

Lunch: Bean or beef tacos, salad bar, milk

Wednesday 1/25

Snack: Blueberry bread & cream cheese/oatmeal, fruit, milk

Lunch: Baked pasta & cheese, roasted veggies, salad bar, milk

Thursday 1/26

Snack: Mixed grain toast & scrambled eggs/oatmeal, fruit, milk

Lunch: Roasted chicken & potatoes, salad bar, milk

Friday 1/27

Snack: Yogurt & granola/oatmeal, fruit, milk

Lunch: Hamburger, cheese/veggie burger, salad bar, milk



MARK YOUR CALENDAR

Monday 1/23-8:45-3pm-Third grade class to the Academy of Science in SF

Tuesday 1/24-10:30-12:30pm-Dance Palace field trip 'Til Dawn, A Cappella ensemble for grades K-2, 4th-8th

Early Dismissal: Stinson campus at 1pm & Bolinas campus at 1:15pm

Tuesday January 24th Parent Education Event

Mindful Parenting with Roni Habib from EQ Schools

6:00PM in the Quesada-Please join us!

Friday 1/27-Grades 3rd-5th field trip to the Symphony at Veteran's Memorial Hall in San Rafael

Tuesday 2/7-Wednesday 2/8-Book Fair in Bolinas school library

BSUSD 2016-17 AFTERNOON BUS
EARLY DISMISSAL SCHEDULE:
Early dismissal dates: 1/24, 2/28, 3/28, 4/25, 5/23

BOLINAS RESIDENTS-ALL GRADES

Early dismissal days	Location
1:20	Leave Bolinas Campus
1:22	Mesa Park
1:23	Overlook and Poplar
1:24	Overlook and Alder
1:26	Elm and Birch (<i>red light stop</i>)
1:27	Elm and Dogwood
1:28	Alder and Hawthorn
1:29	Alder and Opal
1:30	Elm and Ocean Parkway (Agate Beach)
1:32	Elm & Maple BPUD (<i>red light stop</i>)
1:33	Elm and Juniper
1:34	Elm and Hawthorn
1:35	Tacherra Ranch
1:39	275 Mesa Road
1:44	Park and Brighton (tennis courts)
1:45	Park and Brighton
1:46	Wharf and Brighton
1:48	Bolinas School

STINSON RESIDENTS-ALL GRADES

1:20	Leave Bolinas Campus
1:22	227 Horseshoe Hill Rd
1:23	605 Horseshoe Hill Rd
1:24	710 Horseshoe Hill Rd
1:36	Elwood's
1:40	Stinson Beach Post office
1:45	Stinson Campus – Drop-off ONLY

Please be at bus stop 5 minutes early

FEB
7



AERIAL ARTS SPRING 2017

Beginning Intermediate 3:45pm
Intermediate Advanced 4:45pm

Every Tuesday Starting February 7 through April 25, 2017

Taught by Joanna Haigood, long time aerialist and teaching artist

BOLINAS COMMUNITY CENTER - WHARF ROAD

For more information contact Joanna at jhaigood@zaccho.org

Reminder!
Coastal Art & Poetry Contest entries must be postmarked by January 31



Art by Gianina Fan, 8th grade, honorable mention in the 2016 contest

Let our coast and ocean inspire you! Win great prizes!
Have your work featured online and exhibited throughout California!

California students in kindergarten through 12th grade are invited to submit artwork or poetry with a California coastal or marine theme to the annual Coastal Art & Poetry Contest.

Entries must be postmarked by **January 31, 2017** to be eligible for the upcoming contest. For rules and entry form (and helpful links for teachers and students), visit our website or email coast4u@coastal.ca.gov. You can also download a contest flyer.

Up to ten winners will be selected to win \$100 gift certificates to an art supply store (for artists) or book store (for poets). Each winner's sponsoring teacher will receive a \$50 gift certificate for educational supplies, courtesy of Acorn Naturalists. All winners and honorable mentions will receive tickets to visit the Aquarium of the Pacific, courtesy of the Aquarium. Students may have their work featured on Commission web pages and materials, and winning entries will be exhibited throughout the state.

The 2016 contest is currently on exhibit at Seymour Marine Discovery Center in Santa Cruz until the end of January. Please visit if you're in the area!

Judging assistance is graciously provided by Chapman University's Tabula Poetica program.

Prints of past winners from this contest as well as winners from our fantastic photography contest are available for purchase, helping to fund this contest and other education efforts.